

CARE INSTRUCTIONS

Congratulations on the purchase of your new climbing skins!

FOLLOW THESE SIMPLE RULES TO PRESERVE YOUR SKINS FOR THE BEST DAYS:

Big Sky Mountain Products climbing skins are produced in Bozeman, MT of the finest materials available. While we work hard to supply you with the most durable skins on the market, some simple steps are required to keep you gliding and climbing for seasons to come.

BREAK IN YOUR GLUE

Our skins are very sticky out of the box, but will break in to provide the perfect stick over the long term. To accelerate the break in process, stick your skins together and pull them apart 5-10 times before use.

KEEP THE GLUE CLEAN

Dirt, oil, tree matter, and other "junk" can lead to poor adhesion to your splitboard and reduce life of the glue.

PROTECT THE GLUE BETWEEN RUNS AND SEASONS

Between runs the skins should be folded onto themselves glue-to-glue and stowed. Between seasons the skins should be dried, folded onto themselves, and stored in a cool dry place. Cheat Sheets should not be left on skins during long-term storage. They should instead be stored directly glue-to-glue. These steps will protect and maintain the glue surface.

DO NOT EXPOSE THE SKINS TO EXCESSIVE HEAT

Exercise caution around high-temperature heat sources such as heaters and stoves. Too much heat can break down your skin glue.

TAKE CARE OF YOUR SPLITBOARD

It is important to keep your splitboard tuned and especially waxed to prevent glue peel. If your splitboard is well cared for, your glue will never come off onto your bases or edges.

Phantom Glide Treatment is not a replacement for wax as it pertains to skin glue.

WAX YOUR SKINS

Waxing your skins will help to increase glide and repel water. Apply by pressing wax firmly onto the skin and running with the grain of your fibers. Especially helpful in the spring!

DO NOT OVERSTRETCH THE TAIL STRAP

The tail strap tension should be set so the clip snaps over the tail of the splitboard easily. Over-tightening can pull the skin off the splitboard, working against its natural camber.

FOLLOW OUR JOURNEY & SHARE YOURS

@BIGSKYMOUNTAINPRODUCTS

USE #TAKINGYOUFURTHER TO BE FEATURED

SEE MORE PRODUCTS AT BIGSKYMOUNTAINPRODUCTS.COM

BSIMP

BIG SKY MOUNTAIN PRODUCTS

SPLITBOARD TRIM & FIT INSTRUCTIONS



WOULD YOU RATHER WATCH A VIDEO?

CHECK OUT OUR SPLITBOARD SKIN
FITTING TUTORIAL ON YOUTUBE

BIG SKY MOUNTAIN PRODUCTS 



BEFORE YOU START YOU'LL NEED:

- Skins
- Tip Rings
- Cutting Tool
or BSMP Utility Knife
- Marker
- Scissors
- Tape
- Your Splitboard



FOR BEST RESULTS WE HIGHLY RECOMMEND:

- Tuning Vices
- Cutting Board

WOULD YOU RATHER WATCH A VIDEO?

CHECK OUT OUR SPLITBOARD SKIN FITTING TUTORIAL ON YOUTUBE

BIG SKY MOUNTAIN PRODUCTS



1



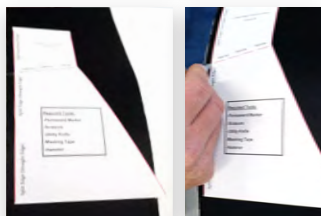
- A** Cut out the template.
- B** Identify which skin matches with each half of your board. The offset on each tail clip should match with the split edge of the board (or the straight edge).

2



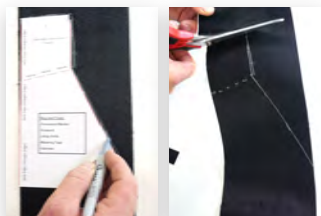
- A** Attach one skin to the tail of the matching half of your board. The open end of the wire clip should sit on the top sheet of your board, and the plastic connector should buckle toward the tail of your board.
- B** Buckle tail connector down.

3



- A** Stretch the skin over the board roughly flush with the split edge.
- B** Mark "fold line" onto skin or release paper $\approx 1/2"$ below the tip of your board.
- C** Remove skin from board.

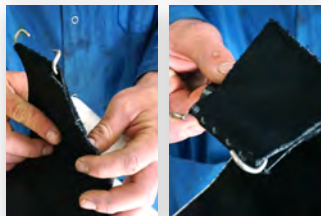
4



- A** Orient your template so that it matches the flat edge of your board and the "fold line" which you just marked on your skin.
- B** Trace the template onto your skin and cut along the traced lines (The template can also be traced onto release paper to avoid marking your skins).

You should be left with a skinny "fold over" which you'll use in the next step.

5



- A** Peel release paper back from tip of skin.
- B** Run your fold over through your tip connector and place connector at fold line.
Be sure that the open end points toward the foldover.
- C** Stick foldover to rest of skin glue-to-glue, securing tip connector.

6



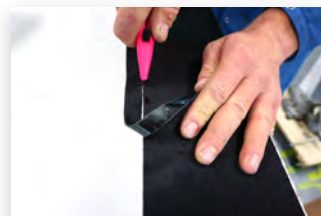
- A** Punch 2 holes through fold over and underlying skin with provided nail.
- B** Assemble 1 rivet in each hole and hammer together.

7



- A** Remove the paper from the rest of the skin.
- B** Attach the tip wire that you just installed to the tip of the board and stretch the skin over the base of your board so that your split edge is showing with $\approx 1/8"$ of base material adjacent to it.
- C** Connect and buckle down tail clip. Adjust for light tension if necessary.

8



- A** Cut the skin flush to the carving edge of your board.

9



- A** Recenter the skin on your board and buckle your tail clip to check your work.
- B** Repeat this process on the other half of your board.
- C** Go splitboarding!



YOU CAN EXTEND THE TAPERS AT THE TIP AND TAIL OF YOUR SKIN TO REDUCE WEIGHT AND IMPROVE GLIDE.

SPLIT EDGE (STRAIGHT EDGE)

←
**LEAVE LONGER IF
YOU'RE UNSURE OF
YOUR FIT**



**CHECK OUT OUR
SPLITBOARD SKIN
FITTING TUTORIAL
ON YOUTUBE**



BIG SKY MOUNTAIN PRODUCTS



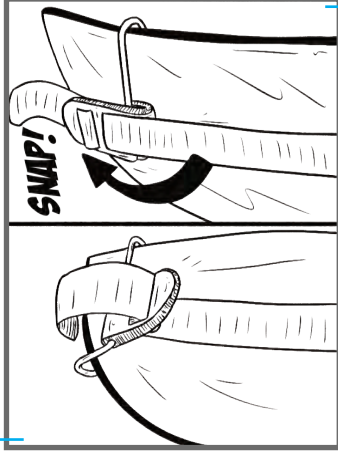
BSMP TIP ASSEMBLY TEMPLATE



FOLD LINE

SPLIT EDGE (STRAIGHT EDGE)

PLACE THE CLIP
OVER YOUR TAIL ...



SNAP!

... THEN PUSH IT UP TO TENSION
AND LOCK ON THE TAIL



DETAIL OF TIP RING
ORIENTATION



BSMP TIP ASSEMBLY TEMPLATE



CHECK OUT OUR
SPLITBOARD SKIN
FITTING TUTORIAL
ON YOUTUBE



BIG SKY MOUNTAIN PRODUCTS



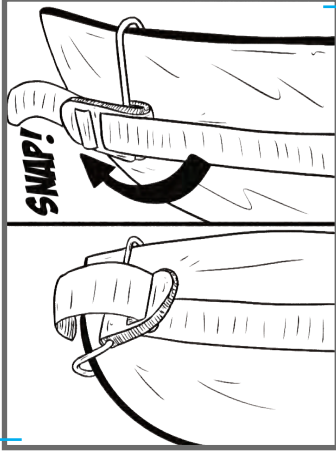
**LEAVE LONGER IF
YOU'RE UNSURE OF
YOUR FIT**



SPLIT EDGE (STRAIGHT EDGE)

FOLD LINE

PLACE THE CLIP
OVER YOUR TAIL ...



... THEN PUSH IT UP TO TENSION
AND LOCK ON THE TAIL

SPLIT EDGE (STRAIGHT EDGE)



DETAIL OF TIP RING
ORIENTATION