

CARE INSTRUCTIONS

Congratulations on the purchase of your new climbing skins!

FOLLOW THESE SIMPLE RULES TO PRESERVE YOUR SKINS FOR THE BEST DAYS:

Big Sky Mountain Products climbing skins are produced in Bozeman, MT of the finest materials available. While we work hard to supply you with the most durable skins on the market, some simple steps are required to keep you gliding and climbing for seasons to come.

BREAK IN YOUR GLUE

Our skins are very sticky out of the box, but will break in to provide the perfect stick over the long term. To accelerate the break in process, stick your skins together and pull them apart 5-10 times before use.

KEEP THE GLUE CLEAN

Dirt, oil, tree matter, and other "junk" can lead to poor adhesion to the ski and reduce life of the glue.

PROTECT THE GLUE BETWEEN RUNS AND SEASONS

Between runs the skins should be folded onto themselves glue-to-glue and stowed. Between seasons the skins should be dried, folded onto themselves, and stored in a cool dry place. Cheat Sheets should not be left on skins during long-term storage. They should instead be stored directly glue-to-glue. These steps will protect and maintain the glue surface.

DO NOT EXPOSE THE SKINS TO EXCESSIVE HEAT

Exercise caution around high-temperature heat sources such as heaters and stoves. Too much heat can break down your skin glue.

TAKE CARE OF YOUR SKIS

It is important to keep your skis tuned and especially waxed to prevent glue peel. If your skis are well cared for, your glue will never come off onto your bases or edges.

Phantom Glide Treatment is not a replacement for wax as it pertains to skin glue.

WAX YOUR SKINS

Waxing your skins will help to increase glide and repel water. Apply by pressing wax firmly onto the skin and running with the grain of your fibers. Especially helpful in the spring!

DO NOT OVERSTRETCH THE TAIL STRAP

The tail strap tension should be set so the clip snaps over the tail of the ski easily. Over-tightening can pull the skin off the ski, working against its natural camber.

FOLLOW OUR JOURNEY & SHARE YOURS

@BIGSKYMOUNTAINPRODUCTS

USE #**TAKINGYOUFURTHER** TO BE FEATURED

SEE MORE PRODUCTS AT BIGSKYMOUNTAINPRODUCTS.COM

BSMP

BIG SKY MOUNTAIN PRODUCTS

SKI SKIN TRIM & FIT INSTRUCTIONS

WOULD YOU RATHER WATCH A VIDEO?

CHECK OUT OUR SKI SKIN FITTING
TUTORIAL ON YOUTUBE

BIG SKY MOUNTAIN PRODUCTS 



BEFORE YOU START YOU'LL NEED:

- Skins
- Tip Rings
- Cutting Tool
or BSMP Utility Knife
- Marker
- Scissors
- Tape
- Your Skis



FOR BEST RESULTS WE HIGHLY RECOMMEND:

- Tuning Vices
- Cutting Board

WOULD YOU RATHER WATCH A VIDEO?

CHECK OUT OUR SKI SKIN FITTING TUTORIAL ON YOUTUBE

BIG SKY MOUNTAIN PRODUCTS

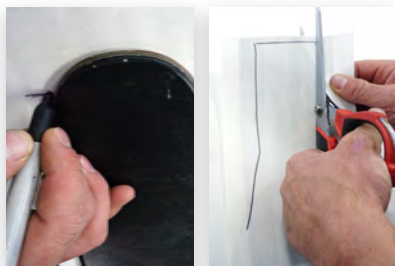


1



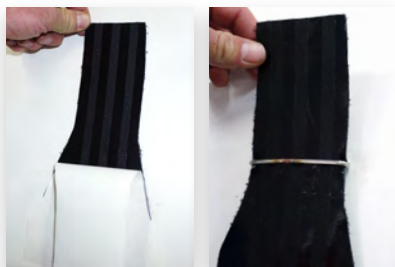
- A** Clip tail connector onto ski
Don't take the paper off yet
- B** Cut out the template

2



- A** Stretch skin over the length of ski
- B** Mark the "fold line" onto release paper 1/2" down from tip of ski
- C** Align the "fold line" from template with your mark, trace template onto release paper, and cut it out, leaving a narrow "fold over" to secure your connector

3



- A** Peel release paper back from tip of skin
- B** Run your fold over through your tip connector and place connector at fold line
Be sure that the tip notch points toward the fold over

4



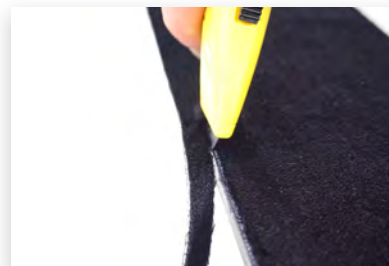
- A** Stick fold over to skin glue to glue, securing tip connector
- OPTIONAL STEP**
You may cut your fold over short if you rivet it together
- B** Punch holes with provided nail
- C** Assemble 1 rivet in each hole and hammer together

5



- A** Remove release paper from skin
- B** Put skin on ski, offsetting approximately 1/8" toward one side
Don't worry, this offset doesn't have to be perfect

6



- A** Cut along the edge with extra offset flush to the edge of your ski

7



- A** Move the skin over so that both the edge of the ski and 1/8" of the base are visible next to the cut edge
- B** Cut the skin flush to the opposing edge of your ski

8



- A** Recenter that skin to check your work
- B** Repeat the process to cut your other skin
- C** Go skiing!



YOU CAN EXTEND THE TAPERS AT THE TIP AND TAIL OF YOUR SKIN TO REDUCE WEIGHT AND IMPROVE GLIDE.



BSMP TIP ASSEMBLY TEMPLATE



**LEAVE LONGER FOR
EXTRA ADJUSTMENT**

IMPORTANT:

Cut your fold
over the **FULL**
WIDTH of the
template

CUT HERE IF USING RIVETS



FOLD LINE

ALIGN 1/2" BELOW TIP OF SKI

CENTER LINE



**CENTER TEMPLATE
ON SKIN, AND THEN
EXTEND TAPER LINES
TO EDGE OF SKIN**

**DETAIL OF TIP RING
ORIENTATION**



**CHECK OUT OUR
SKI SKIN FITTING
TUTORIAL ON
YOUTUBE**



BIG SKY MOUNTAIN PRODUCTS